



## Notice Board

- Thank you for sending in family photos. It has been great to see so many pictures, and the children have LOVED sharing who they live with and their families. If your child has not yet shared their picture (we have a few), they will be shared at the beginning of next week.
- We change your child's book every Monday, Wednesday and Friday.

[jbrooker@fandb.hert.sch.uk](mailto:jbrooker@fandb.hert.sch.uk)   [epotma@fandb.hertsch.uk](mailto:epotma@fandb.hertsch.uk)



### Physical Development

The children will continue to have P.E. sessions with Mrs Potma on a Thursday morning, with Mr Cooper on a Friday afternoon, alongside bikes with Kelly on a Friday afternoon.

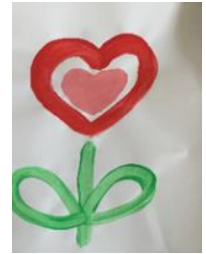
### Literacy

This week we will start some simple RWI (phonics) games. We will be introduced to Fred Frog, and start by thinking about what sounds our names begin with.



### Expressive Arts and Design

The children will have the opportunity to access topic related activities on the craft shelf.



### Maths

We will be introducing the number zero this week. We will be talking about what it is and how many it shows.

Why do you love me so much?



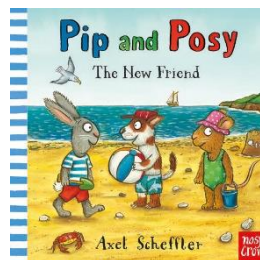
### Computing

We will be continuing to learn how to colour in on the computers!



### Montessori

In this section, we will be sharing a new skill from Montessori each week. The children will be looking at Pink Tower next week with Mrs Burton and Mrs Rider. This is from the Sensorial Montessori Section. The Pink Tower develops the child's visual perception. The children learn to discriminate by size, ordering it from biggest to smallest to make a sturdy tower. Each block looks and feels the same, therefore drawing the child's attention to the changing dimensions only.



### Communication and Language

We will be reading 'Pip and Posy: The New Friend' this week and discussing how Pip and Posy make a new friend, and how we can mirror that in our conversations with our friends.

### Personal, Social and Emotional Development

We will have our first SCARF lesson this week. SCARF lessons focus on PSHE. This week we will be thinking about ourselves and what key features we have. We will then be drawing a picture of our face.